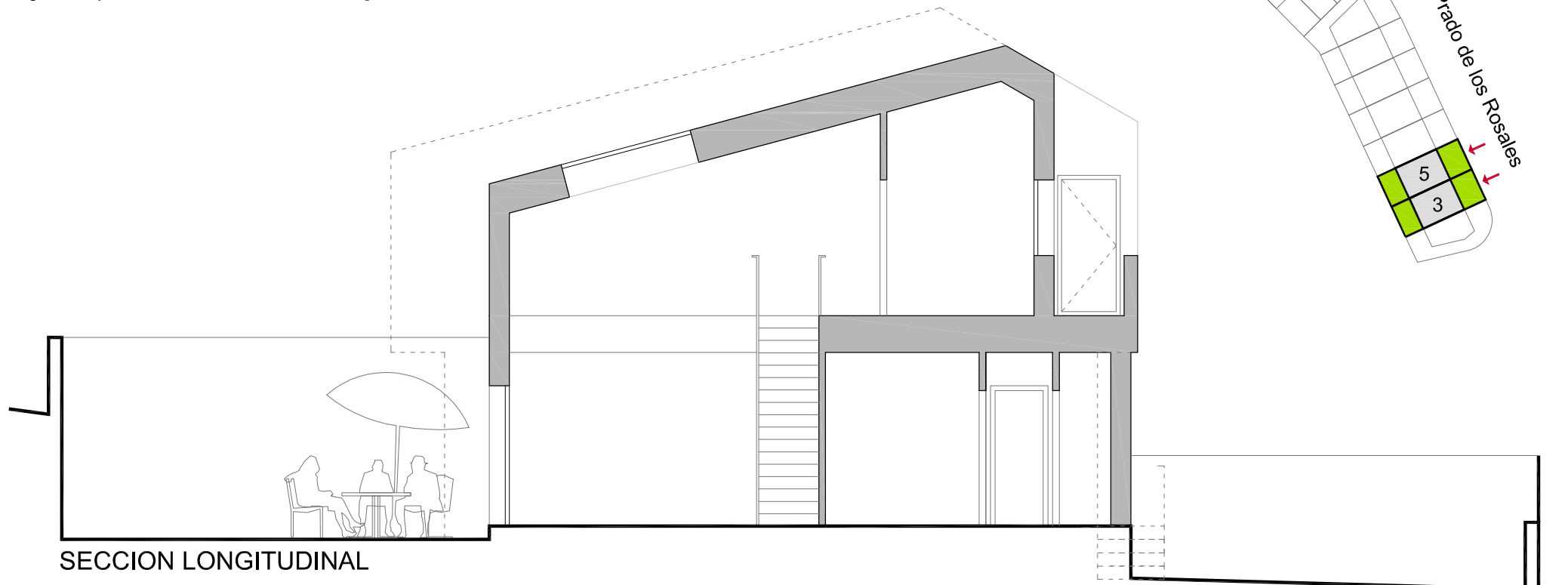
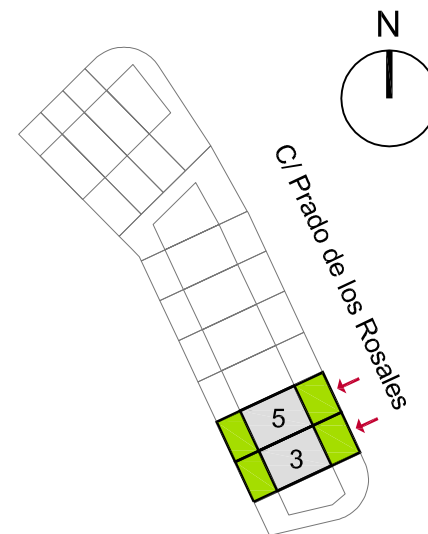
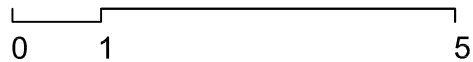
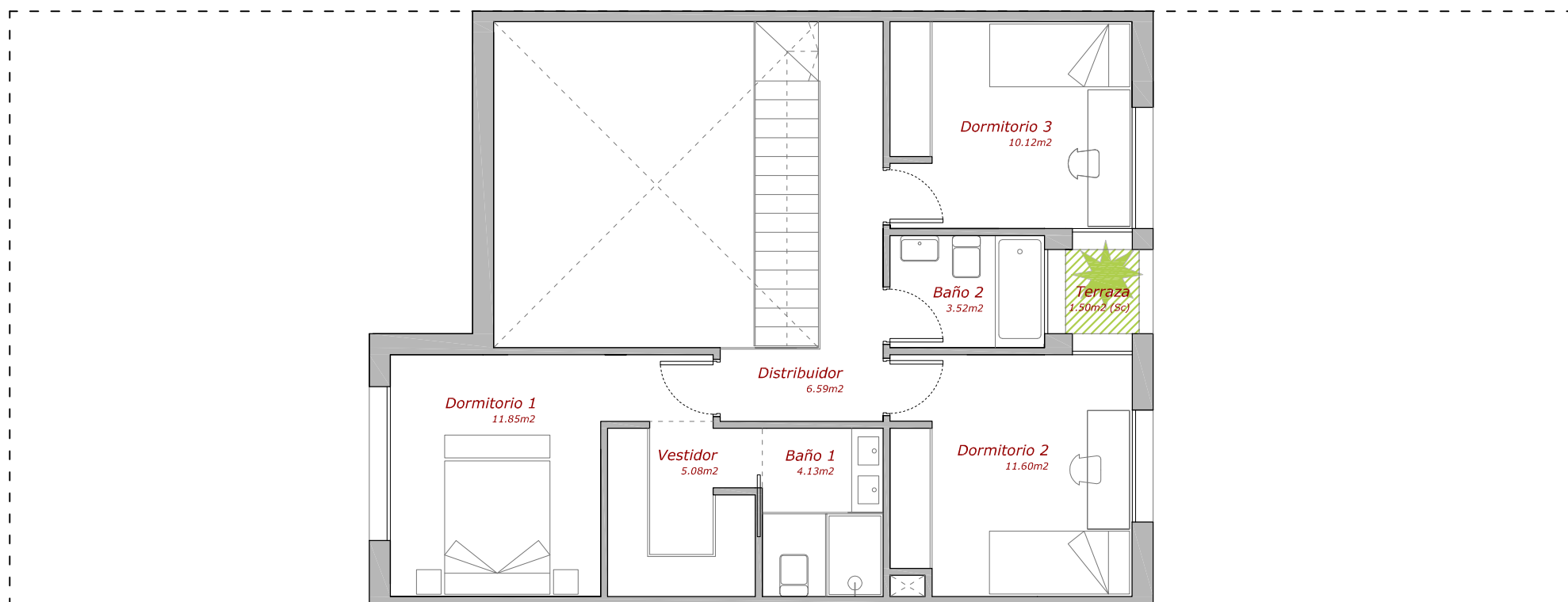


SUP. PARCELA: 189 m²
 SUP. UTIL: 126.27 m²
 SUP. CONSTR. INTERIOR: 147.76 m²
 SUP. CONSTR. EXT. (patio y terraza): 55.14 m²
 SUP. CONSTR. TOTAL: 202.90 m²

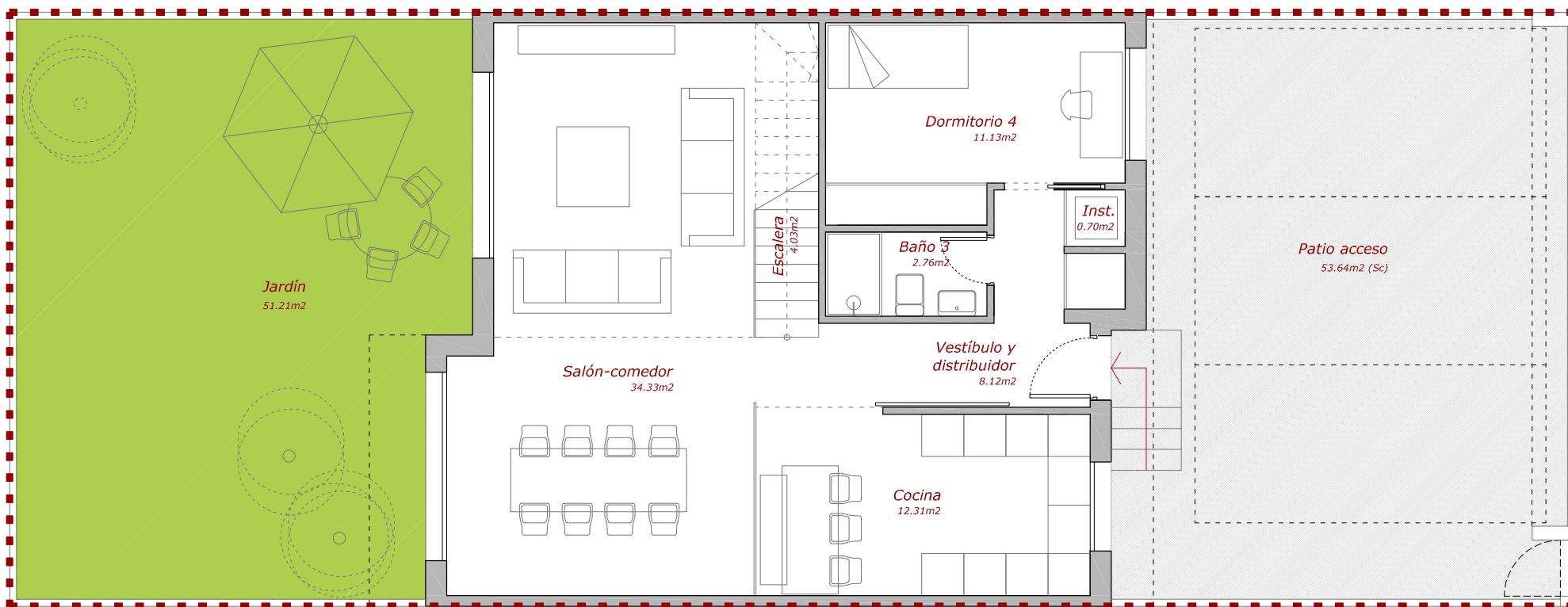
12 VIVIENDAS UNIFAMILIARES COLMENAR VIEJO, MADRID



SECCION LONGITUDINAL



PLANTA PRIMERA



PLANTA BAJA