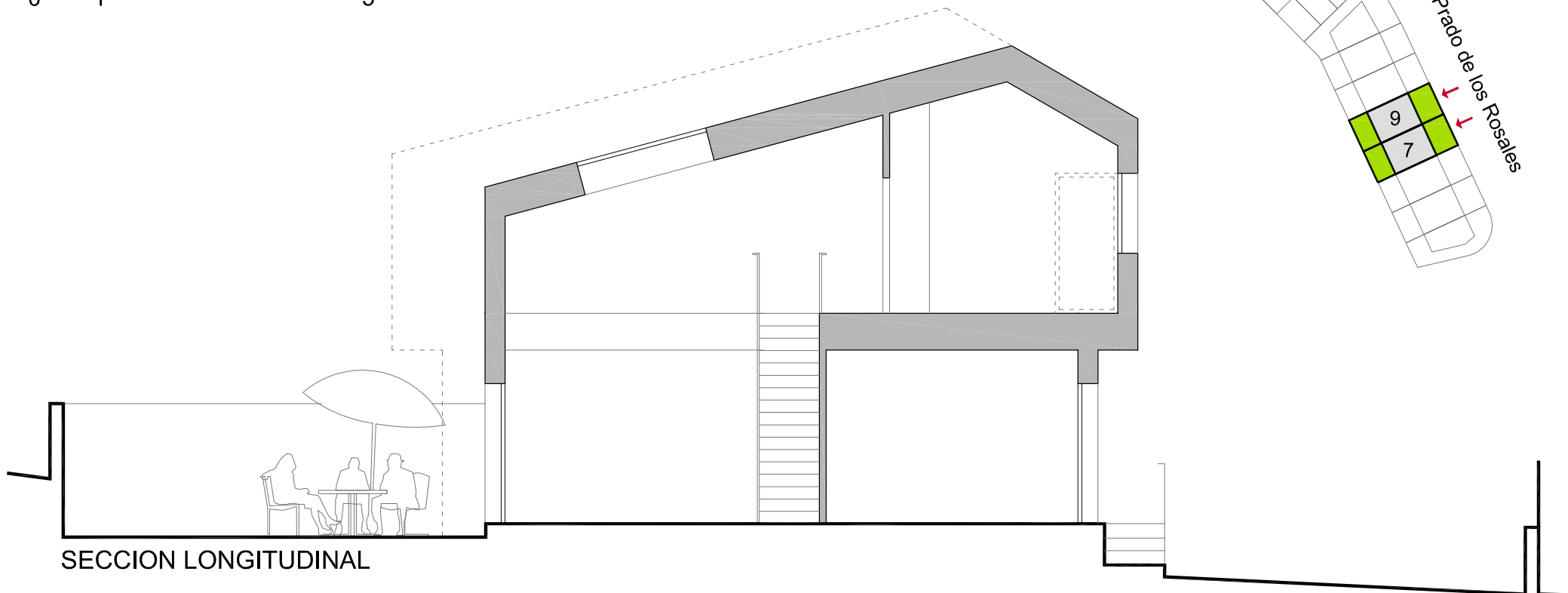
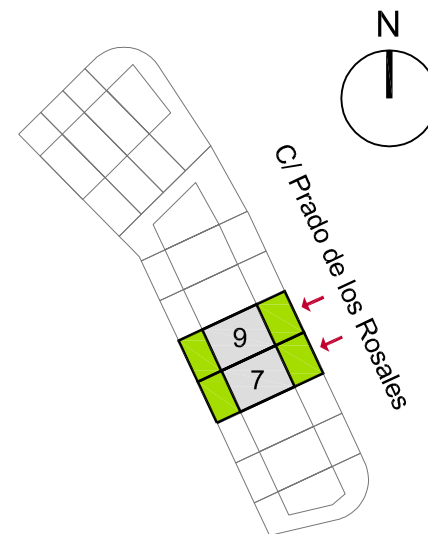
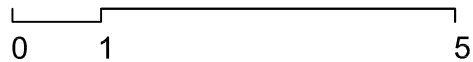
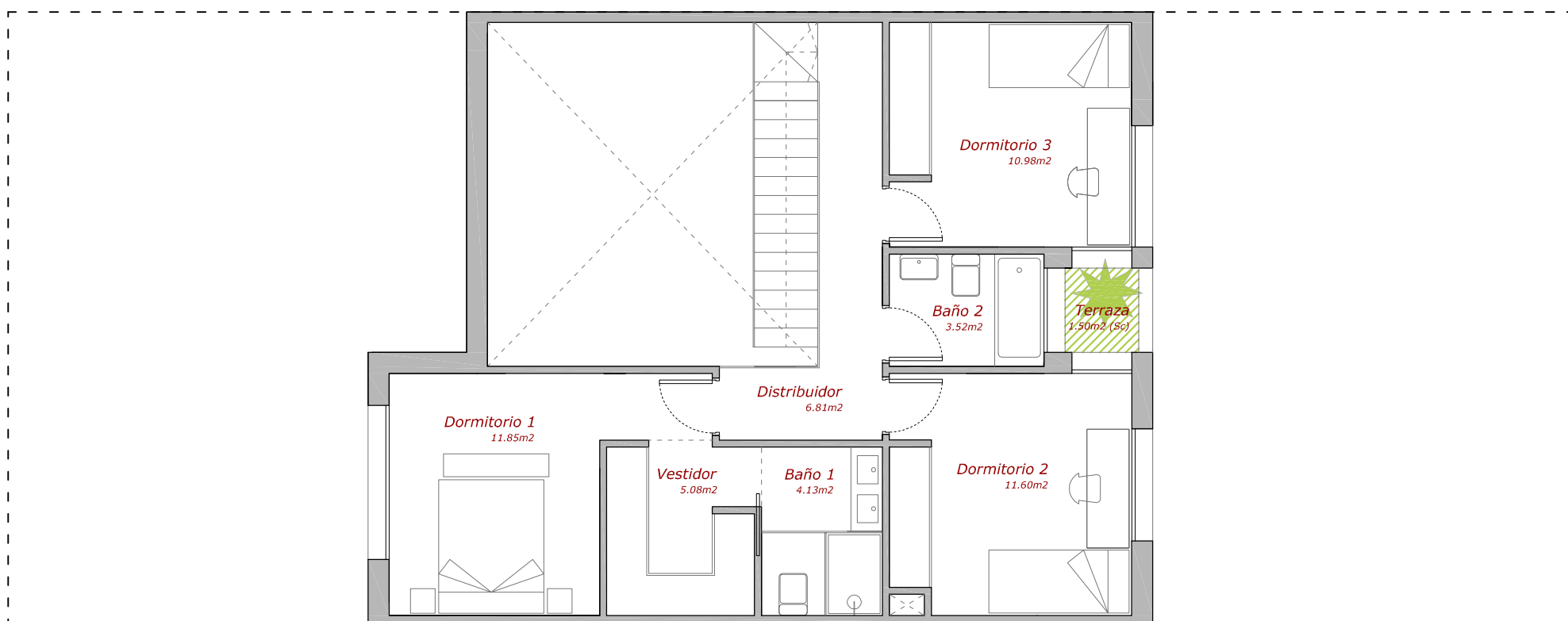


SUP. PARCELA: 194 m<sup>2</sup>  
 SUP. UTIL: 130.05 m<sup>2</sup>  
 SUP. CONSTR. INTERIOR: 150.83 m<sup>2</sup>  
 SUP. CONSTR. EXT. (patio y terraza): 56.85 m<sup>2</sup>  
 SUP. CONSTR. TOTAL: 207.68 m<sup>2</sup>

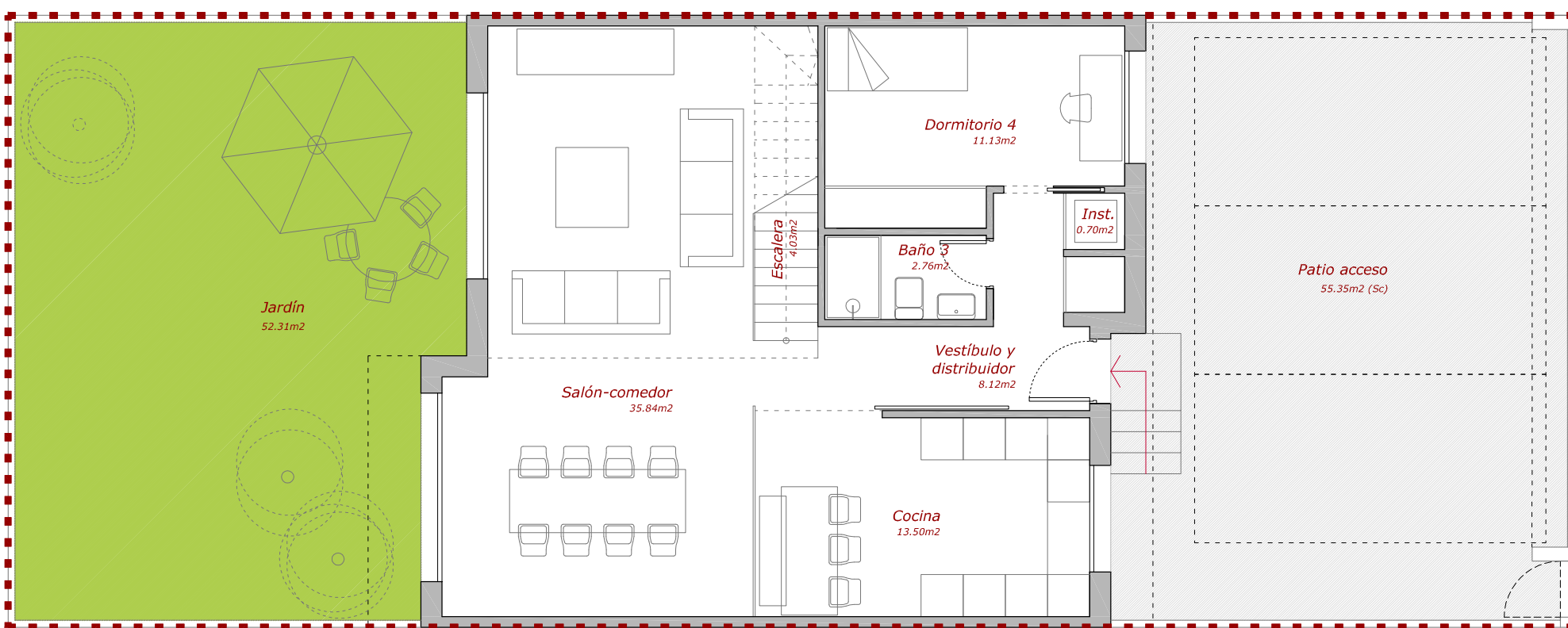
## 12 VIVIENDAS UNIFAMILIARES COLMENAR VIEJO, MADRID



SECCION LONGITUDINAL



PLANTA PRIMERA



PLANTA BAJA