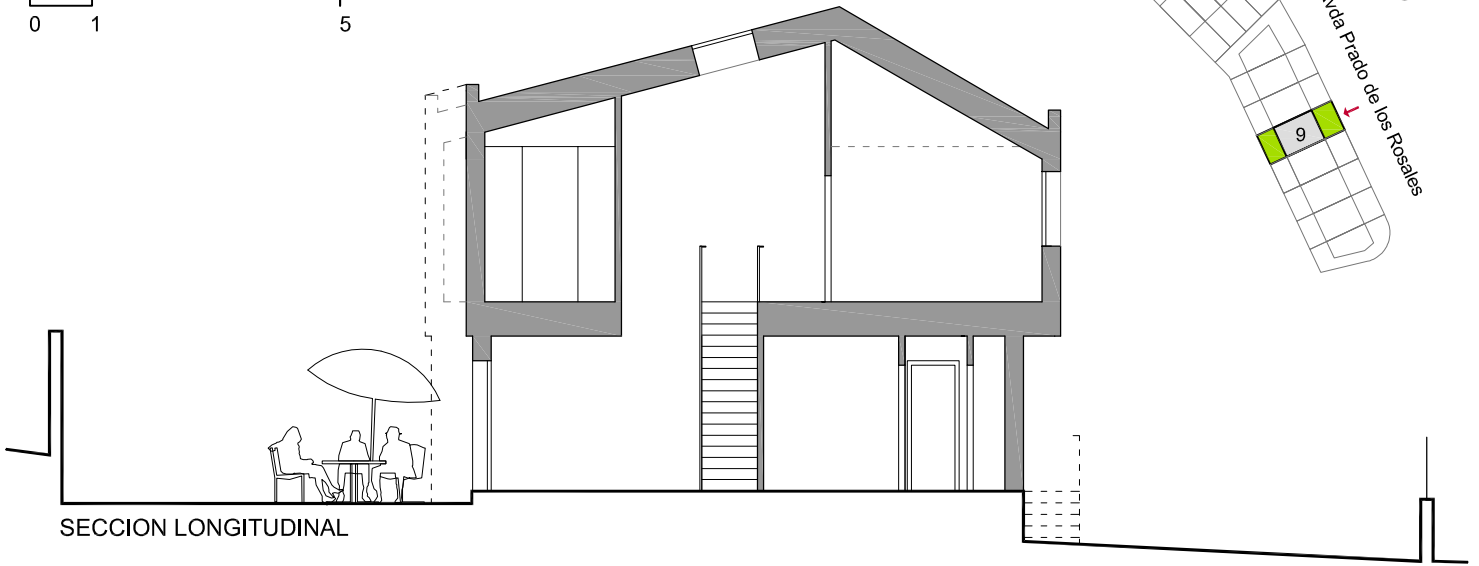
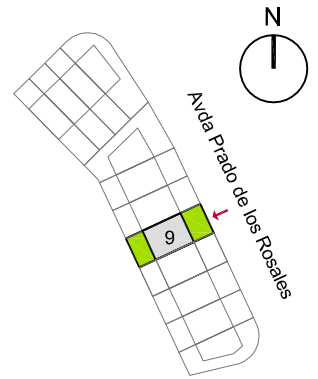
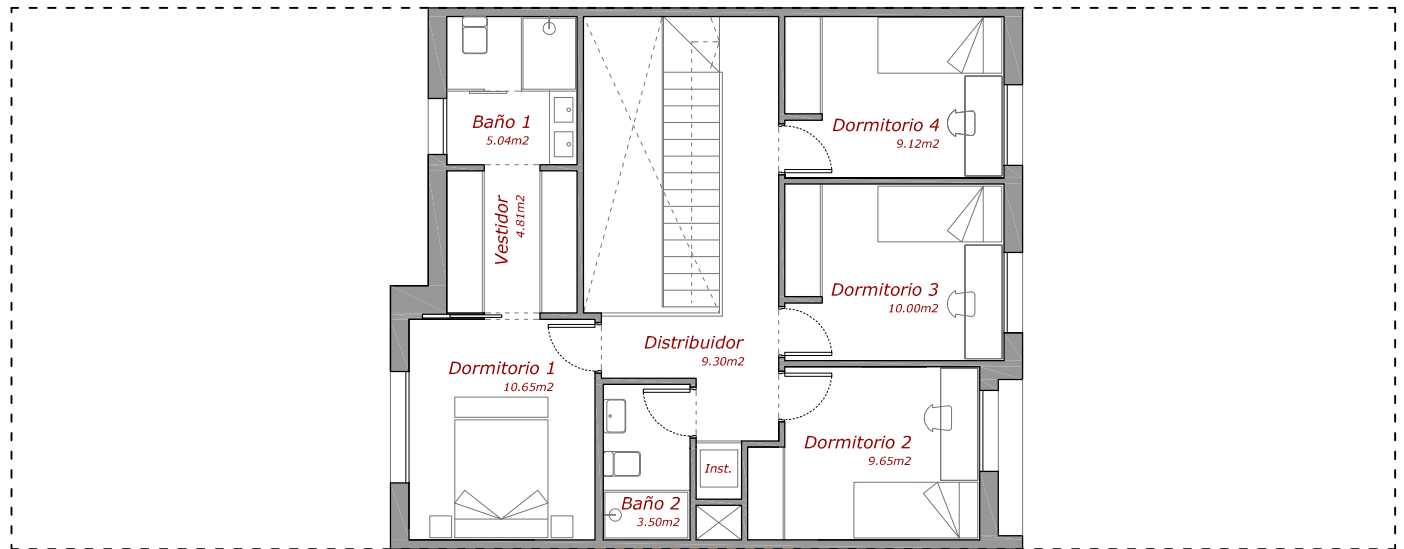


SUP. PARCELA: 194 m<sup>2</sup>  
 SUP. UTIL: 132,74 m<sup>2</sup>  
 SUP. CONSTR. INTERIOR: 153,63 m<sup>2</sup>  
 SUP. CONSTR. EXT. (patio): 58,43 m<sup>2</sup>  
 SUP. CONSTR. TOTAL: 212,06 m<sup>2</sup>

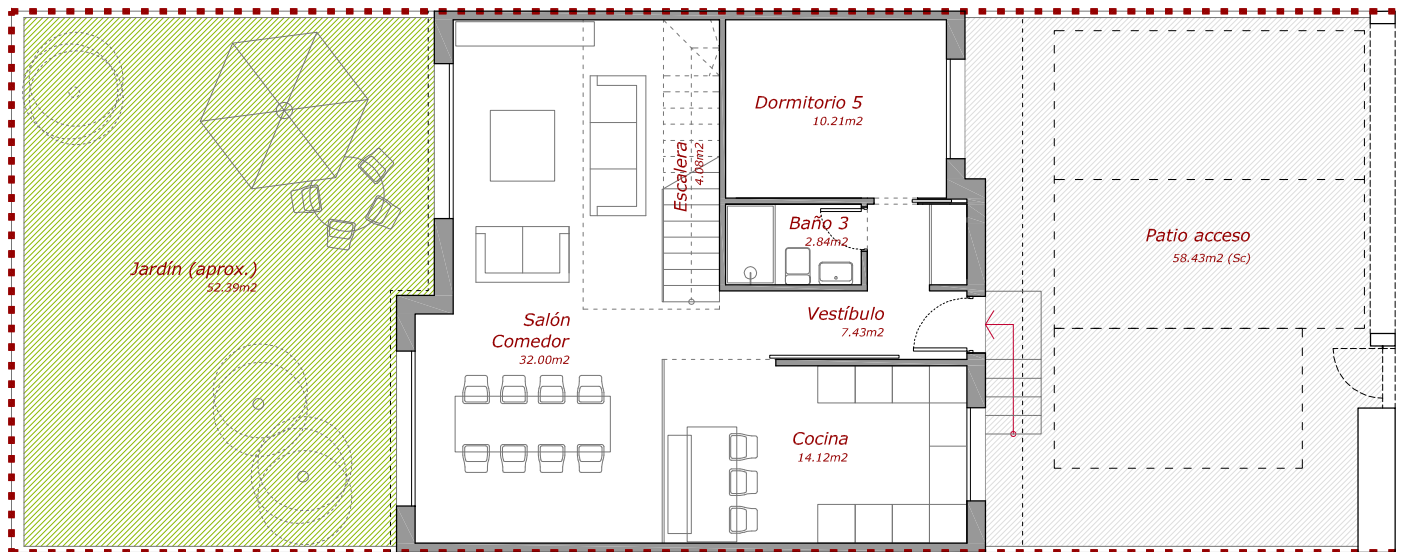
12 VIVIENDAS UNIFAMILIARES  
 COLMENAR VIEJO, MADRID



SECCION LONGITUDINAL



PLANTA PRIMERA



PLANTA BAJA