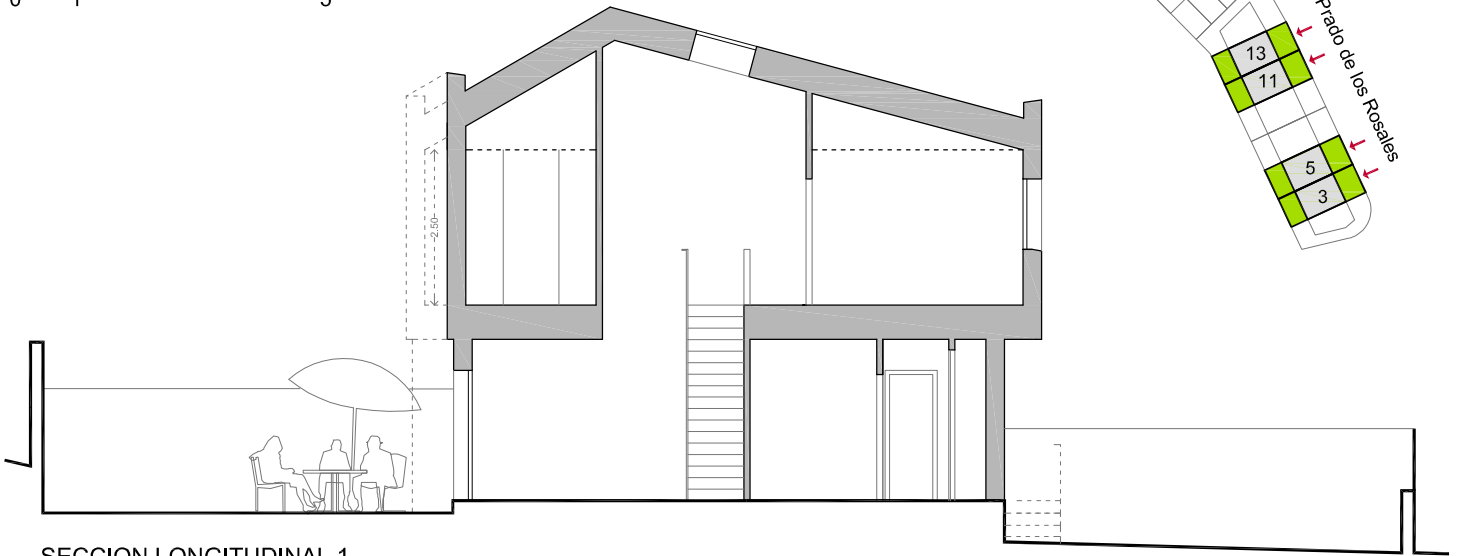
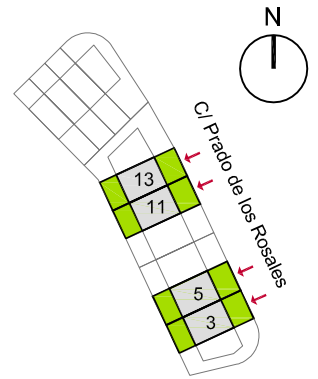
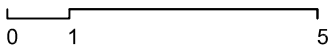
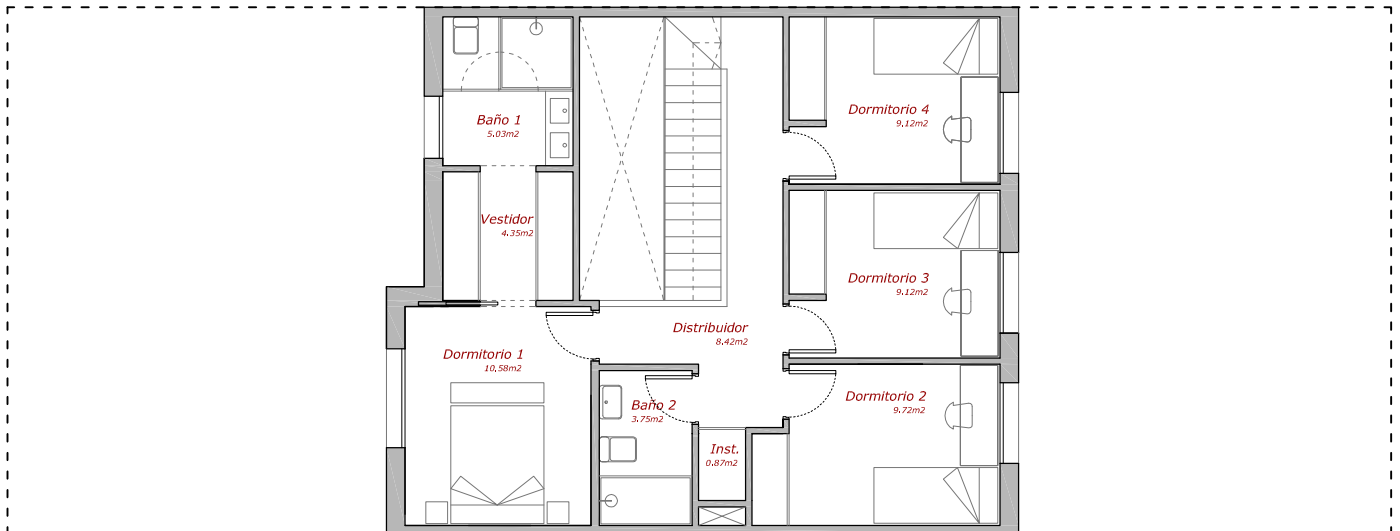


SUP. PARCELA: 189 m²
 SUP. UTIL: 129,53 m²
 SUP. CONSTR. INTERIOR: 149,44 m²
 SUP. CONSTR. EXT. (patio y terraza): 56,80 m²
 SUP. CONSTR. TOTAL: 206,24 m²

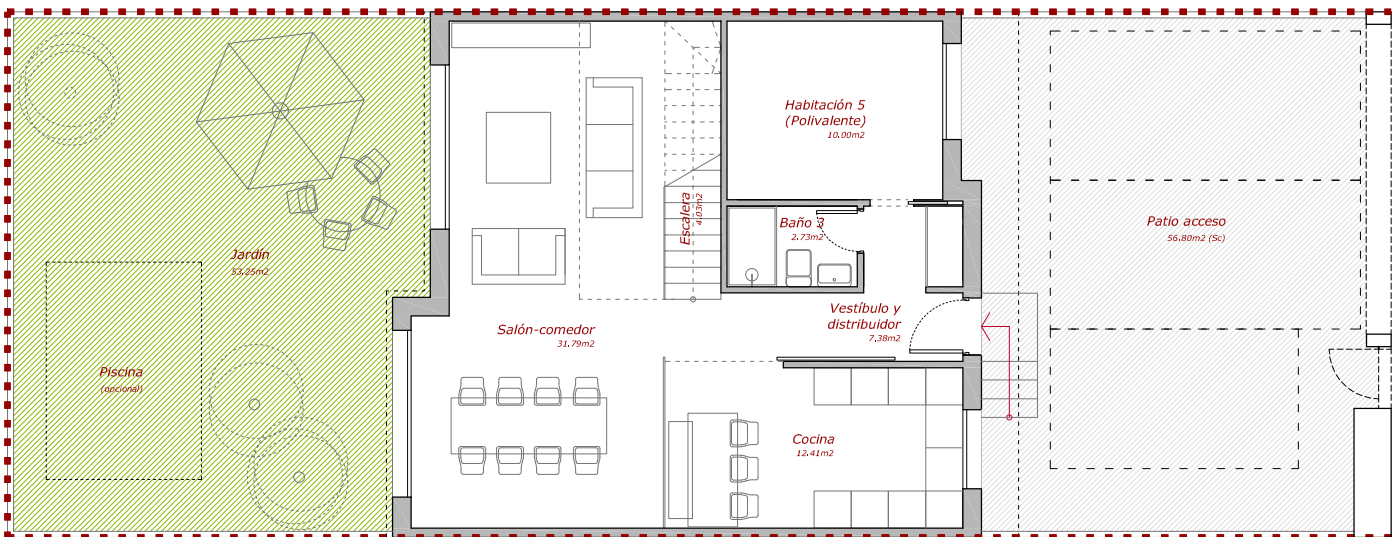
12 VIVIENDAS UNIFAMILIARES
 COLMENAR VIEJO, MADRID



SECCION LONGITUDINAL 1



PLANTA PRIMERA



PLANTA BAJA