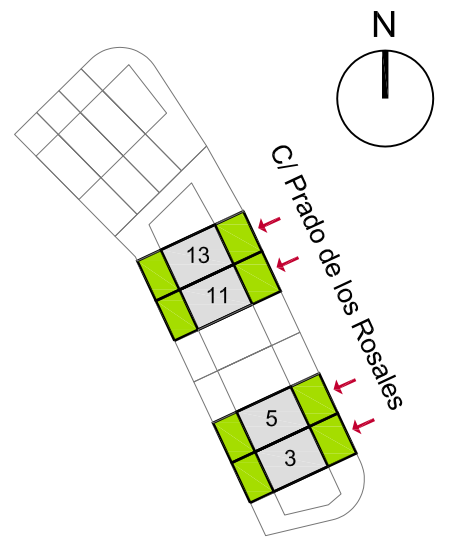
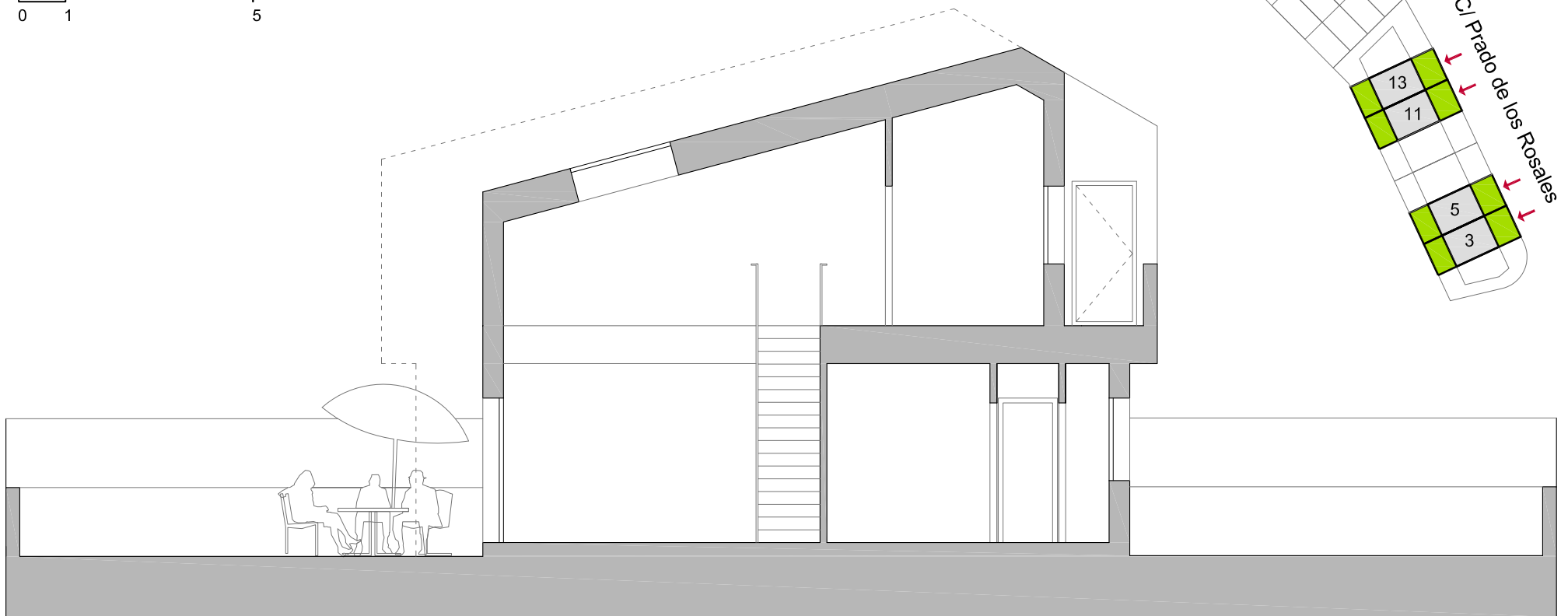


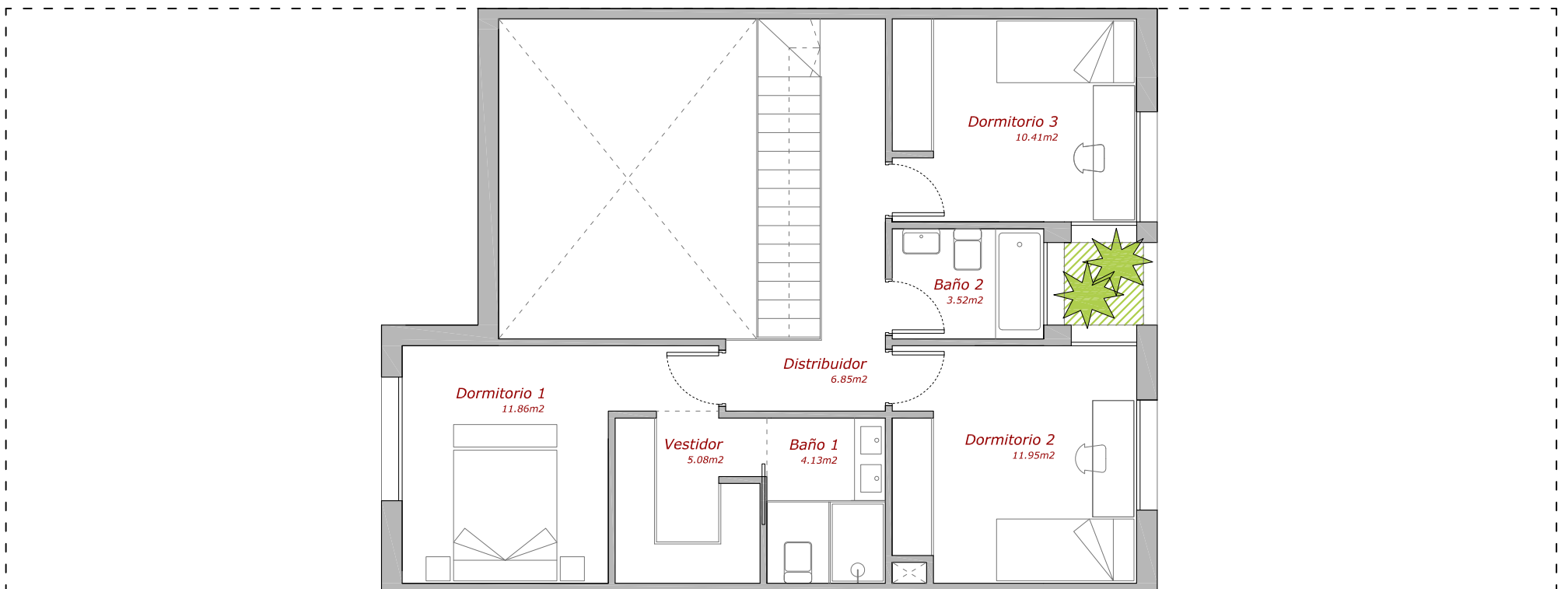
SUP. PARCELA: 191 m<sup>2</sup>  
 SUP. UTIL: 128.28 m<sup>2</sup>  
 SUP. CONSTR. INTERIOR: 149.43 m<sup>2</sup>  
 SUP. CONSTR. EXT. (patio y terraza): 54.14 m<sup>2</sup>  
 SUP. CONSTR. TOTAL: 203.57 m<sup>2</sup>

## 12 VIVIENDAS UNIFAMILIARES COLMENAR VIEJO, MADRID

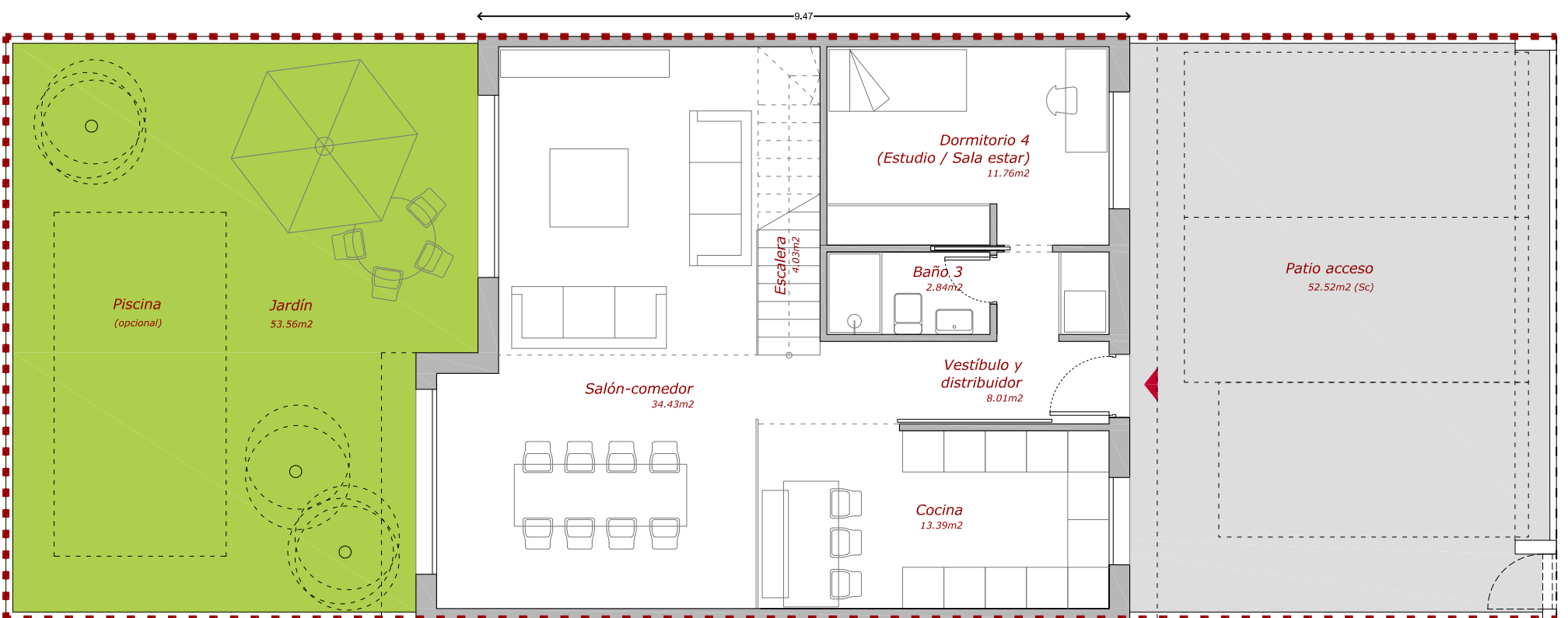
0 1 5



SECCION LONGITUDINAL



PLANTA PRIMERA



PLANTA BAJA